



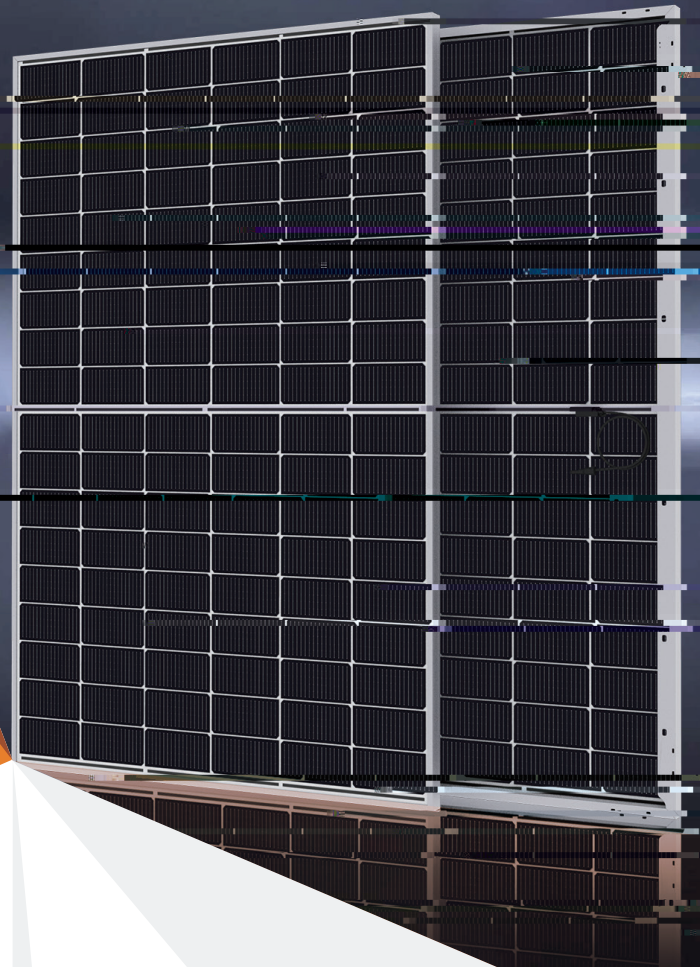
# BIPRO

TM7G54M **108-cell**

420 - 440W

Bifacial Dual Glass

16BB Half-cut N-type



## SYSTEM & PRODUCT CERTIFICATES

- IEC 61215 / IEC 61730 / UL 61730
- ISO 9001: 2015 Quality Management System
- ISO 14001: 2015 Environment Management System
- ISO 45001: 2018 Occupational Health and Safety Management Systems



## PERFORMANCE WARRANTY

## KEY FEATURES



### 16BB Half-cut Cell Technology

Lower LID/LeTID degradation and better low light performance  
Attenuation  $\leq 1\%$  (1st year) /  $\leq 0.4\%$  (Linear)



### Industry Leading High Yield

Bifacial TOPCon cell technology,  
Dual-sided power generation gain from back side depending on albedo, significantly reduce LCOE



### Excellent Anti-PID Performance

192 hours Anti-PID test



### Wider Application

No water-permeability and high wear-resistance,  
can be widely used in high-humid, windy and dusty area



### IP68 Junction Box

High waterproof level

Guaranteed Power

## ELECTRICAL CHARACTERISTICS

Testing Condition	STC	NMOT	STC	NMOT	STC	NMOT	STC	NMOT	STC	NMOT
Maximum Power (Pmax/W)										
Operating Voltage (Vmpp/V)										
Operating Current (Impp/A)										
Open-Circuit Voltage (Voc/V)										
Short-Circuit Current (Isc/A)										
Module Efficiency (%)	21.50		21.80		22.00		22.30		22.50	

STC: Irradiance 1000W/m<sup>2</sup>, Spectra at AM1.5, Module Temperature 25 °C. Power output tolerance: 0~+5W, Test uncertainty for Pmax: ±3%  
 NMOT: Irradiance 800W/m<sup>2</sup>, Spectra at AM1.5, Ambient Temperature 20 °C, Wind speed 1m/s

## REAR SIDE POWER GAIN(REFERENCE TO 430W FRONT)

Pmax gain	5%	10%	15%	20%	25%
Pmax/W	452	473	495	516	538
Vmpp/V	32.68	32.68	32.68	32.68	32.68
Impp/A	13.82	14.48	15.13	15.79	16.45
Voc/V	39.00	39.00	39.00	39.00	39.00
Isc/A	14.35	15.04	15.72	16.40	17.09

## MECHANICAL CHARACTERISTICS

Cell Type	N-type Mono-Crystallin (16Busbar)
No. of Cells	108pcs in series (6*18)
Module Dimensions	1722*1134*30mm (67.80*44.65*1.18inches)
Weight	24.5kg (54.01lbs)
Front Glass	
Back Glass	
Frame	Anodized Aluminium Alloy
Junction Box	IP68, 3 Bypass Diodes
Output Cables	4mm <sup>2</sup> (IEC), 12AWG(UL) 350mm(+),250mm(-) or Customized Length
Connectors	T01/LJQ-3-CSY/MC4/MC4-EV02

## Electrical Performance

## APPLICATION CONDITIONS

Maximun System Voltage	1500V/DC
Operating Temperature	-40°C~+85°C
Maximun Series Fuse	30A
Safety Protection Class	Class
Mechanical Load	
Refer. Bifaciality Factor	

## TECHNICAL DRAWINGS

## TEMPERATURE CHARACTERISTICS

Temperature Coefficient of Pmax	
Temperature Coefficient of Voc	
Temperature Coefficient of Isc	
Nominal Module Operating Temperature(NMOT)	

## PACKING CONFIGURATION

Pieces Per Pallet	
Pieces Per Container(40'HQ)	